








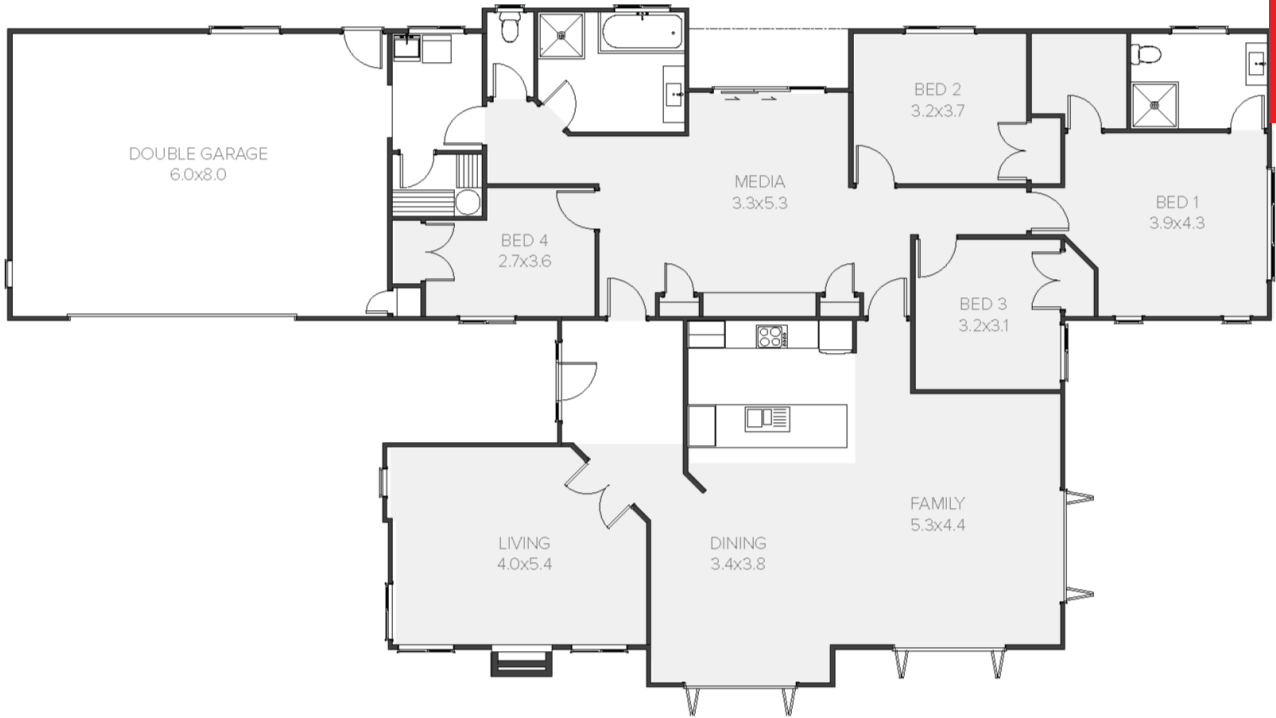
Monaco

 4	 2	 3	 2	 3
---	---	---	---	---

Welcome to a home that's big on features, starting with the option of a generous three-car garage." The Monaco will fit on most urban sites. From the spacious entry, you can access the formal lounge with a feature fireplace or find yourself in the huge open-plan family and dining area with central kitchen.

Monaco

263.03m² | 4 bdrms



Living Area	207.2 m ²
Garage Area	55.83 m ²
Total Floor Area	263.03 m²
Home Width	14.57 m
Home Length	26.9 m

The images may show features which may not be included in the standard plan or price. Your local Jennian New Home Consultant will confirm standard features and discuss your ideas. All plans remain the copyright of Jennian Homes.