








## 4 Trifida Close, Papamoa

 3	 2	 2	 2	 2
---	---	---	---	---

This display home has been carefully considered with a three-bedroom design, incorporating all the modern amenities that a growing family desires. With spacious open-plan dining and living areas, and a separate formal lounge, it's perfect for entertaining guests. The master bedroom is generously proportioned and serves as a parental retreat, complete with a walk-in wardrobe and an ensuite bathroom.

### Tauranga & Western BOP

180 Fifteenth Avenue, Tauranga

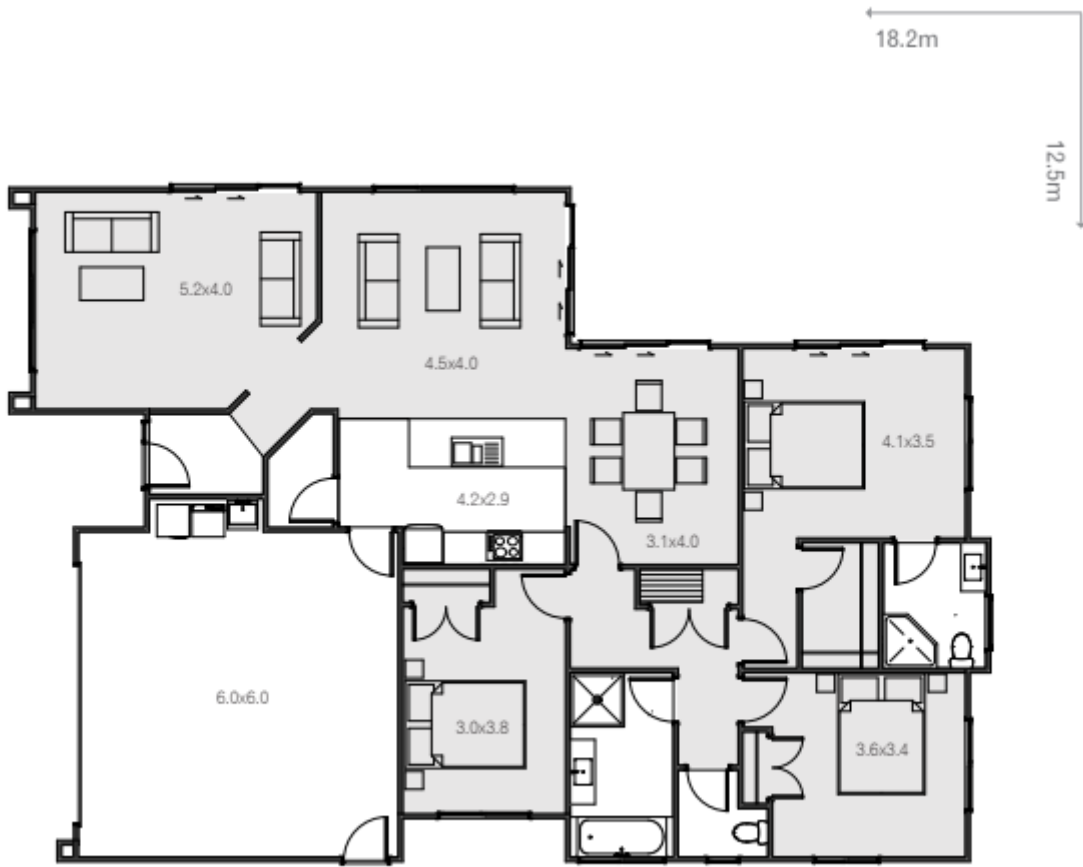
**P** 07 925 9800

**E** [tauranga@jennian.co.nz](mailto:tauranga@jennian.co.nz)

[jennian.co.nz](http://jennian.co.nz)

# 4 Trifida Close, Papamoa

192.64m<sup>2</sup> | 3 bdr



Living Area	154.26 m <sup>2</sup>
Garage Area	38.38 m <sup>2</sup>
<b>Total Floor Area</b>	<b>192.64 m<sup>2</sup></b>
Home Width	12.74 m
Home Length	18.43 m

The images may show features which may not be included in the standard plan or price. Your local Jennian New Home Consultant will confirm standard features and discuss your ideas. All plans remain the copyright of Jennian Homes.